



KS2 - Teacher

Application Pack

North Walsall Primary Academy,
Walsall, West Midlands

Contents

North Walsall Primary Academy,
Walsall, West Midlands



01

About Academy
Transformation
Trust

Page 3



02

North Walsall
Primary Academy
Information

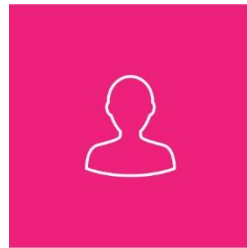
Page 4



03

Job Description

Page 5 - 6



04

Person
Specification

Page 7 - 9



05

How to apply

Page 10



01. About Academy Transformation Trust

We're on a mission

Our mission is to provide the very best education for all pupils and the highest level of support for our staff to ensure every pupil leaves our academies with everything they need to reach their full potential.

These are the things we hold dear

Transparency

As a charity founded on strong ethical practices, Academy Transformation Trust takes pride in being open, honest and crystal clear in everything we do.

Innovation

We are constantly striving to do all we can to make education the best it possibly can be. We are brave in our actions and do everything we can to have a positive impact on whole child development.

Collaboration

We believe the future of education relies upon effective collaboration between academies, and better collaboration between academies and their local communities.

Ambition

We are determined to improve education nationwide by encouraging collaboration and giving academies everything they need to realise their full potential.

We believe every child matters and deserves a first class education.

Our team knows first-hand how to make education better for schools, pupils and their teachers.

For us, the future of UK education relies upon schools working closely together to share best practices, giving every child the best chance in life. We set up ATT to make this vision a reality.

As a not for profit trust, we work with our growing family of primary and secondary academies, and further education providers in the Midlands, East of England and South East.



02. North Walsall Primary Academy Information

From our school badge you will see that North Walsall Primary Academy is a multi – cultural school that has children from many cultures around the world.

At NWPA we are proud of our children, staff and the positive environment that we work in. You should make time to come and visit to see the wonderful work around the school.

The environment that we provide is supportive and nurturing which encourages our children to learn and progress. We have very high expectations of our children and the exceptional behaviour and attitude to learning of our pupil’s reflects this.

Our children love to welcome visitors into school and take pride in showing visitors their work and school.

Our academy is a pioneering centre for an exciting new approach to learning, which uses the latest cutting edge technologies to offer an innovative education for our pupils.

Our pupils have access to the latest in technological innovations, both in the classroom where we can monitor their progress and help guide them in this vital stage of their education.

We believe in ‘working together to achieve our best in a supportive and safe environment’. We believe that every child matters and that every child is different. We aim to provide a lively, stimulating and attractive environment where your child will be able to:

- Become literate and numerate
- Become a confident and independent learner
- Develop their full potential
- Learn to respect the rights and beliefs of others

To find out more, please visit www.nwpa.attrust.org.uk





03. Job Description

KS2 Teacher – Primary Academy

The duties outlined in this job description are in addition to those covered by the latest School Teachers' Pay and Conditions Document. It may be modified by the Principal, in consultation with yourself, to reflect or anticipate changes in the job, commensurate with the salary and job title.

Key responsibilities are:

- > to embrace our vision
- > to engage with a culture that promotes excellence, equality, high expectations and aspirations of all pupils in our care
- > to engage with a culture and systems which ensure that safeguarding and child protection are of the highest priority
- > to engage with and implement all policies and procedures, including providing feedback for continuous improvement of policies and procedures as appropriate
- > to create and deliver lessons that are at least Good, and strive towards Outstanding
- > to ensure that pupils are offered world class 21st century learning opportunities
- > to support the development of our family of academies
- > to undertake adhoc duties as required.



Specific Responsibilities

Overview

The successful candidate will:

- > work collaboratively within the academy and with other Trust academies to enhance the whole network
- > engage with a culture of high expectations and aspirations so that all pupils are able to achieve their potential and the academy secures high attainment for all
- > continue to transform the quality of teaching and learning by creating and delivering lessons that are at least Good and strive for Outstanding, including the use of effective differentiation within lesson
- > ensure that all staff are respectful towards all pupils, with an unshakable belief in their entitlement to a high quality education, whatever their circumstances and ability
- > take a leading role in the development of new and emerging technologies to enrich and extend the learning experiences of all pupils
- > maintain and enhance best practice as an academy which works with and for its community.

Pupils

The successful candidate will:

- > ensure pupils are always engaged in safe and healthy educational activities in an environment that is rich and colourful and designed to promote enjoyment and excitement in learning
- > identify pupils who require interventions in collaboration with colleagues
- > create and deliver tailored lessons that lead to improved outcomes for pupils
- > engage and build effective working relationships with pupils
- > plan and deliver opportunities to develop the social, emotional and cultural aspects of pupils' learning
- > organise and manage groups or individual pupils; ensuring differentiation of learning needs, reflecting all abilities
- > ensure the academy's Behaviour Policy is implemented effectively.

Ethos

The successful candidate will maintain:

- > our vision to aspire to create a learning community built and sustained by a culture of citizenship, respect, trust, honesty, well-being and financial independence
- > an environment where all members of the academy and its community actively demonstrate their care and concern for everyone and fulfil the requirements of our shared vision
- > high morale, with the Principal setting an example in terms of professional standards and leadership.

Other

The successful candidate will:

- > maintain links with organisations
- > liaise as necessary with other recognised bodies or agencies in the furtherance of the academy's needs or those of any child, employee or parent/carer.



04. Person Specification

KS2 Teacher – Primary Academy

Key responsibilities

At the academy, we strive to achieve excellence and to be judged an outstanding academy. In order to maintain the high standards and build on success of the academy, you will need to:

- > champion a culture of high expectations and aspiration so that all pupils are able to achieve their potential and the academy secures high attainment for all
- > support the continued transformation of the quality of teaching and learning so that all pupils consistently make progress which is better than pupils nationally
- > ensure that all staff are respectful towards all pupils, with an unshakable belief in their entitlement to a high quality education, whatever their circumstances and ability
- > take a leading role in the development of new and emerging technologies to enrich and extend the learning experiences of all pupils
- > maintain and enhance best practice as an academy which works with and for its community.

	Essential	Desirable
Professional qualifications and learning	<ul style="list-style-type: none">• has qualified teacher status• has an undergraduate degree	<ul style="list-style-type: none">• undergone safer recruitment training• evidence of recent and relevant continuing professional development, including in leadership and management• held variety of roles and responsibilities within a primary school/academy
Experience of	<ul style="list-style-type: none">• being a “Good” classroom teacher• working with children with a variety of needs• linking with statutory agencies	<ul style="list-style-type: none">• being an “Outstanding” classroom teacher

04. Person Specification

	Essential	Desirable
Safeguarding	<ul style="list-style-type: none"> • displays commitment to the protection and safeguarding of children and young people • has up to date knowledge and understanding of relevant legislation and guidance in relation to working with, and the protection of, children and young people • will co-operate and work with relevant agencies to protect children 	<ul style="list-style-type: none"> • holds relevant safeguarding training/qualifications
Shaping the future	<ul style="list-style-type: none"> • can think strategically to identify where interventions will be most effective • can ensure creativity, innovation and use of appropriate technologies to ensure the academy 'achieves excellence' • can ensure our shared vision is clearly articulated, shared and implemented in a range of compelling ways • can respond effectively to change and challenge 	<ul style="list-style-type: none"> • has the ability to lead and implement change and challenge • can motivate and enthuse all staff in the development of the academy
Leading, Learning and Teaching	<ul style="list-style-type: none"> • demonstrates excellent understanding of the principles of effective teaching and learning • has excellent and current knowledge of all curriculum requirements and can implement, monitor and support these effectively • can articulate characteristics of outstanding teaching and learning for pupils of all abilities • has a successful, proven track record of monitoring, evaluating and improving the quality of teaching and learning • has an excellent understanding of assessment and how it can be used to improve pupil progress has a track record of securing high standards and at least good progress for all pupils • has a track record that demonstrates the very best quality of teaching and learning for all pupil groups including SEN and vulnerable • has a proven track record in setting challenging targets, monitoring and evaluating effectively to challenge poor performance and celebrate success 	<ul style="list-style-type: none"> • has a track record of securing high standards and at least good progress for all pupils • has a track record that demonstrates the very best quality of teaching and learning for all pupil groups including SEN and vulnerable • has a proven track record in setting challenging targets, monitoring and evaluating effectively to challenge poor performance and celebrate success • can take a strategic role in the development of new and emerging technologies to enhance and extend the learning of all students • is committed to continuous learning for all members of the academy community including professional development • demonstrates excellent understanding of the principles of effective teaching and learning in all phases • is an outstanding classroom practitioner within primary education

04. Person Specification

	Essential	Desirable
Developing self and working with others	<ul style="list-style-type: none"> • can develop and maintain effective strategies and procedures for intervention • can ensure effective planning, allocation, support in the delivery of interventions • can develop and maintain a culture of high expectations for self and for others • can review own practice, set personal targets and take responsibility for personal development • can manage own workload and that of others to allow appropriate work/life balance • can maintain confidentiality • can articulate and understand current educational issues 	<ul style="list-style-type: none"> • can demonstrate a proven track record of developing self within an educational context • can show resilience in the face of challenge • has excellent interpersonal skills, with the ability to listen and communicate effectively in all contexts and to command respect
Managing the organisation	<ul style="list-style-type: none"> • has the ability to articulate and communicate the vision and values that make the academy unique • has the ability to secure high levels of engagement from staff which enable excellent pupil achievement 	<ul style="list-style-type: none"> • has a proven track record in demonstrating best value



05. How to apply

North Walsall Primary Academy,
Walsall, West Midlands

Salary:

M1 to M4

Closing date:

26 January 2018

Interviews:

31 January 2018

Start Date:

Easter 2018

Visits to the school:

For further information about the role and the academy, or if applicants wish to visit prior to completing their application, please the academy on 01922 720822.

Applying

Please apply by visiting
www.academytransformationtrust.co.uk/vacancies

Forward as one. Improving Education Together.

Address:

Academy Transformation Trust
Suite 413
Jewellery Business Centre
95 Spencer Street
Birmingham
B18 6DA

Visit:

academytransformationtrust.co.uk

Call:

0121 794 7275

Email:

office@academytransformation.co.uk



@AcademyTrust